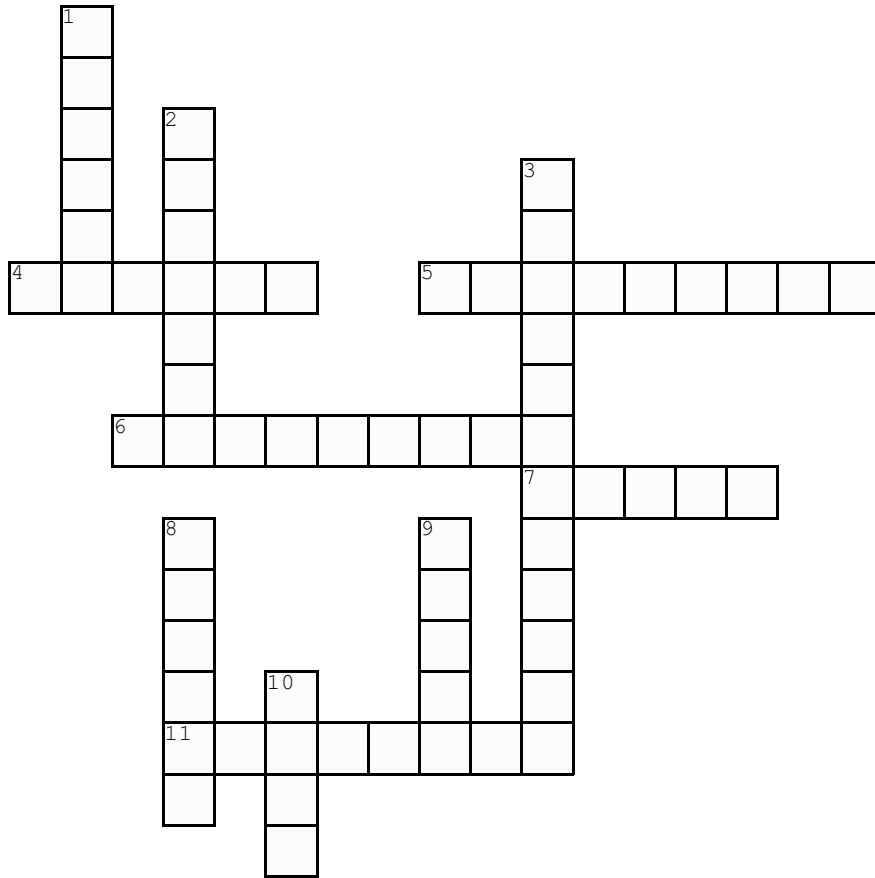


Name: \_\_\_\_\_

# Electricity Crossword

Please complete the crossword below



Created with [TheTeachersCorner.net](http://TheTeachersCorner.net) [Crossword Puzzle Generator](#)

## **Across**

- 4.** I have a positive charge in an atom
- 5.** Any material suitable for carrying an electrical current
- 6.** Any material not suitable for carrying an electric current
- 7.** Everything is made of these
- 11.** I have a negative charge in an atom

## **Down**

- 1.** I am an insulator
- 2.** I have no charge at all
- 3.** The man who discovered electricity with a kite and a key
- 8.** I am a conductor
- 9.** This is measured in watts
- 10.** Jay County ...

# Electricity Word Search

Please complete the word search below

O N L P L C F P I S  
W E T R C O S O N J  
K U O O O N G W S R  
J T A T P D R E U U  
B R R O P U C R L B  
X O A N E C V O A B  
K N T K R T B H T E  
D X O J C O O N O R  
R E M C H R Q B R K  
S O W U J S T N S P

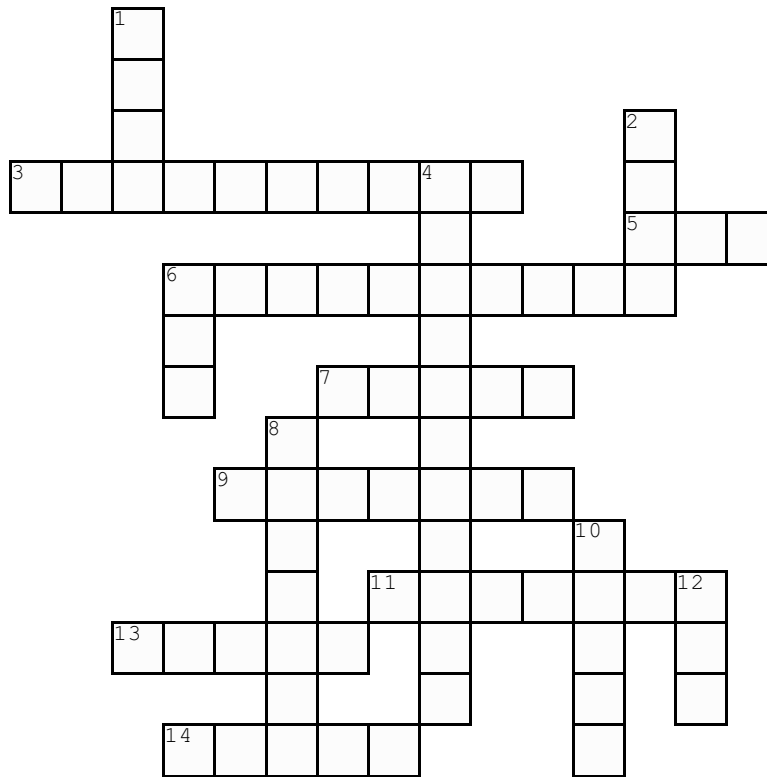
---

CONDUCTORS	RUBBER
ATOM	NEUTRON
POWER	INSULATORS
COPPER	PROTON
REMC	

Name: \_\_\_\_\_

# Energy Crossword

Complete the crossword below



Created with [TheTeachersCorner.net](http://TheTeachersCorner.net) [Crossword Puzzle Generator](#)

## **Across**

- 3.** Power from water
- 5.** You breathe this every day
- 6.** Heat inside the earth
- 7.** Used for hydropower, drinking & irrigation
- 9.** Used for nuclear fuels
- 11.** Plant materials and animal waste used as fuel
- 13.** Power from the sun
- 14.** A living, renewable energy source

## **Down**

- 1.** Moving air used to create energy
- 2.** Fossil fuel consisting of carbonized vegetable matter burned to generate energy
- 4.** Energy made available by the flow of a charge through a conductor
- 6.** It's not a solid, not a liquid so it must be a...
- 8.** Colorless gas found in natural gas and petroleum; used as a fuel
- 10.** The planet we all share
- 12.** Where solar heat is produced

# Energy Word Search

Please complete the word search below

K H G E A R T H J V Y X Y M  
W F B P R O P A N E U T D U  
S F H G X T A H G P I L A U  
D Q G A G Z R Y M C B M H W  
L N F S E N P D I W I N D A  
S T X W O Y E R Y U O T E T  
A O Z B T U T O G R M I H E  
G F L Z H C R P G A A H V R  
Q K F A E F O O T N S G E W  
S V C L R O L W R I S I C I  
U I E O M L E E E U E U O E  
N X A S A Q U R E M A L A Y  
M U X I L L M V S O V A L E  
X M R N R T Y V N D M Q K J

---

BIOMASS	PETROLEUM	GEOHERMAL
HYDROPOWER	SOLAR	WIND
COAL	PROPANE	TREES
ELECTRICITY	EARTH	WATER
SUN	AIR	GAS
URANIUM		

NAME \_\_\_\_\_

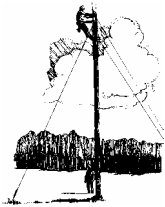
How much wire is needed to repair the Jay County REMC power lines. Measure, draw the missing power line between the poles and record to the nearest inch how much wire is needed.



\_\_\_\_\_ inches



\_\_\_\_\_ inches



\_\_\_\_\_ inches



\_\_\_\_\_ inches



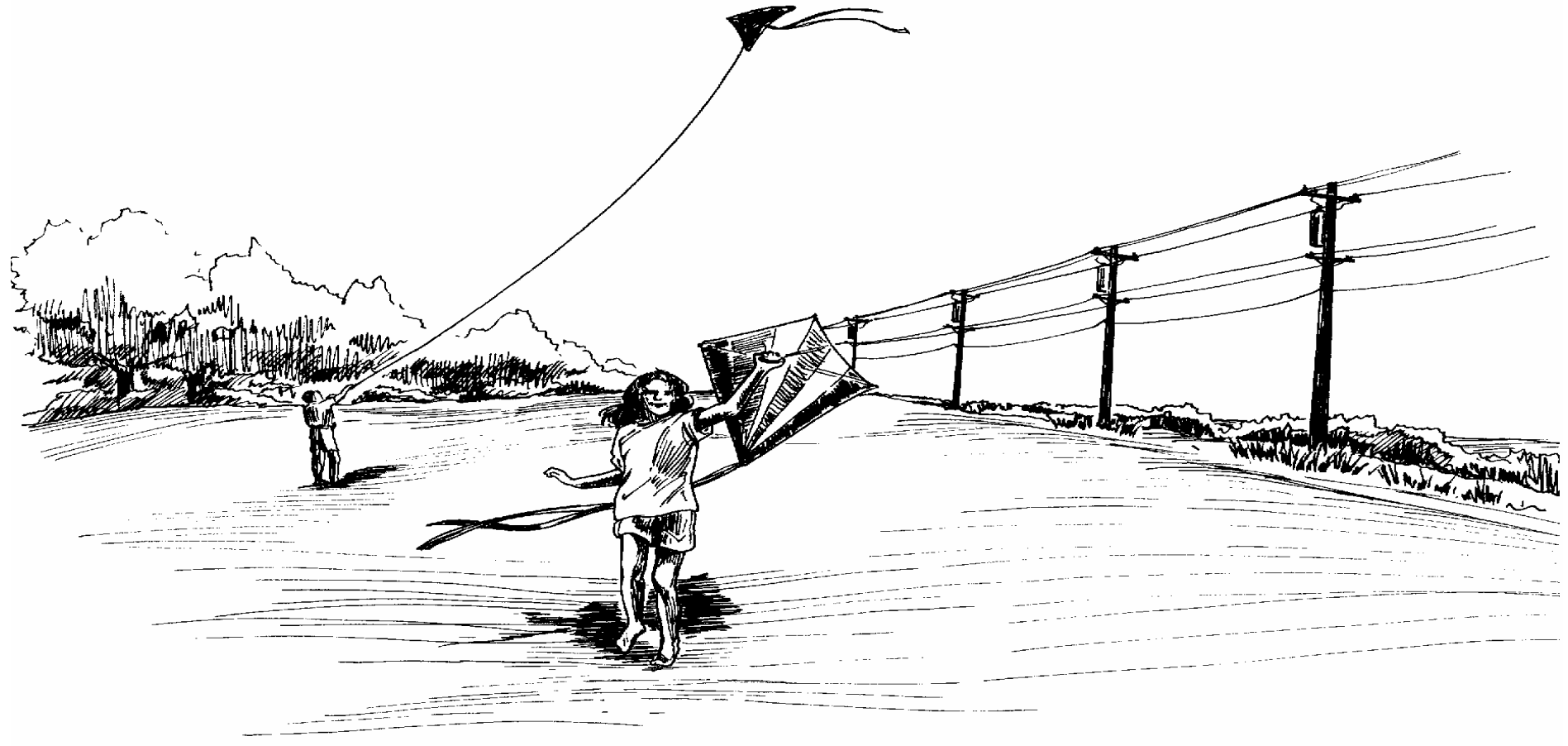
\_\_\_\_\_ inches



\_\_\_\_\_ inches

Using the code, find the secret message. Color the picture.

<u>A</u>	<u>B</u>	<u>C</u>	<u>D</u>	<u>E</u>	<u>F</u>	<u>G</u>	<u>H</u>	<u>I</u>	<u>J</u>	<u>K</u>	<u>L</u>	<u>M</u>	<u>N</u>	<u>O</u>	<u>P</u>	<u>Q</u>	<u>R</u>	<u>S</u>	<u>T</u>	<u>U</u>	<u>V</u>	<u>W</u>	<u>X</u>	<u>Y</u>	<u>Z</u>
1	2	3	4	5	6	7	8	9	10	11	12	13	14	15	16	17	18	19	20	21	22	23	24	25	26



<u>4</u>	<u>15</u>	<u>14</u>	<u>15</u>	<u>20</u>	<u>6</u>	<u>12</u>	<u>25</u>	<u>11</u>	<u>9</u>	<u>20</u>	<u>5</u>	<u>19</u>	<u>14</u>	<u>5</u>	<u>1</u>	<u>18</u>	<u>16</u>	<u>15</u>	<u>23</u>	<u>5</u>	<u>18</u>	<u>12</u>	<u>9</u>	<u>14</u>	<u>5</u>	<u>19</u>
----------	-----------	-----------	-----------	-----------	----------	-----------	-----------	-----------	----------	-----------	----------	-----------	-----------	----------	----------	-----------	-----------	-----------	-----------	----------	-----------	-----------	----------	-----------	----------	-----------